

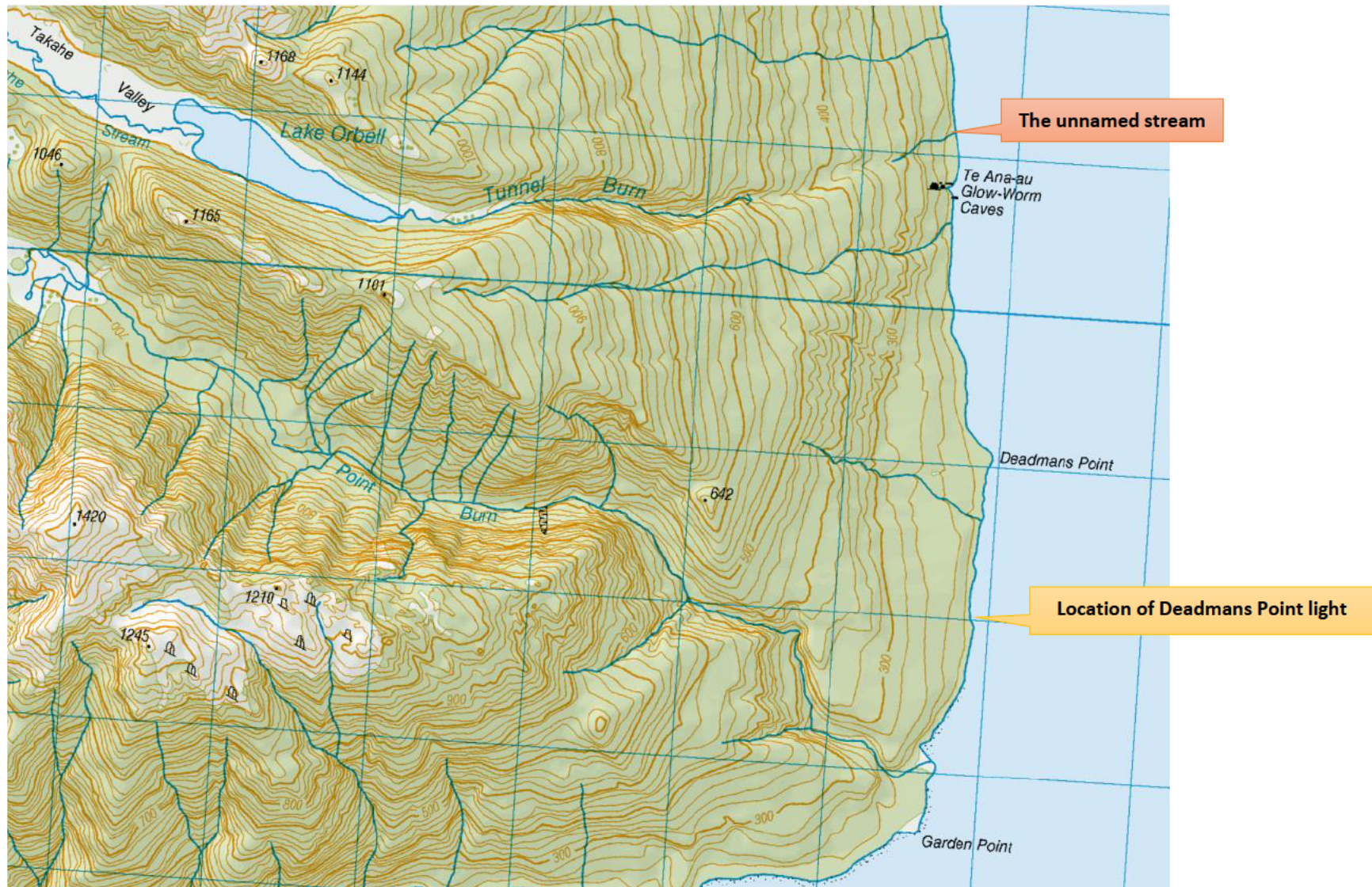
Real Journeys Concession Application Te Ana-au Glowworm Caves Site Infrastructure Plans and Photos

Figure 1. Map of the site which also shows the location of ‘Deadmans Point Navigation Light’ relative to Te Ana-au Glowworm Caves.....	4
Figure 2. Aerial view of the site - including showing uplifted boundary of Takahē Specially Protected area	5
Figure 3. 28/10/1993 Aerial photo of Glowworm Caves, Lake Te Anau	6
Figure 4. 20/03/2022 Aerial photo of the site.....	7
Figure 5. 20/03/2022 Aerial Photo of the site.....	8
Figure 6. Photo of the Te Ana-au Glowworm Cave site taken from the eastern shore of Lake Te Anau.....	9
Figure 7. Photo of the site taken from the eastern shore of Lake Te Anau - zooming in to make Luminosa and caves wharf visible.....	10
Figure 8. Photo of the site taken from eastern shore of Lake Te Anau - zoomed in to show Luminosa alongside of wharf.....	11
Figure 9. Photo of radar reflector (navigation aid) on Deadmans Point	12
Figure 10. Photo of Deadmans Point light (navigation aid).....	13
Figure 11. Photo of the Te Ana-au Glowworm Caves site from Lake Te Anau - i.e. overview of the site	14
Figure 12. Photo of walkway from Te Ana-au Glowworm Caves Wharf to Cavern House.....	15
Figure 13. Diagram showing the layout of the walkways to Cavern House and the cave entrance	16
Figure 14. Photo of the Te Ana-au Glowworm Caves walkway shelter at the landward end of the ‘caves wharf’	17
Figure 15. Photo of Te Ana-au Glowworm Caves Walkway Shelter (where passengers can wait, out of the weather for the Luminosa)	18
Figure 16. Photo of Cavern House from the lake	19
Figure 17. Photo of exterior of Cavern House	20
Figure 18. Photo of the exterior of Cavern House (rear).....	21
Figure 19. Photo of interior of Cavern House.....	22
Figure 20. Photo of the interior of Cavern House.....	23
Figure 21. Photo of rear section of Cavern House – including interpretation panels	24
Figure 22. Photo of interior of Cavern House (access to toilet facilities)	25
Figure 23. Plan of the Beech House.....	26
Figure 24. Drawing of Beech House North elevation	27
Figure 25. Drawing of Beech House West Elevation	28
Figure 26. Photo of Exterior of Beech House.....	29
Figure 27. Photo of interior of Beech House showing the interpretation panels	30
Figure 28. Diagram / plan of Wastewater Treatment System.....	31
Figure 30. Photo of exterior of wastewater treatment plant pumphouse bunker	32
Figure 29. Photo of the interior of the wastewater treatment plant pumphouse bunker with pump well 1 and 2.	33

Figure 31. Photo of the Hydro ‘dam’ and intake	34
Figure 32. Photo of aqueduct race / screens / structures carrying water to the start of the hydro pipeline.....	35
Figure 33. Photo of surge tank and the start of the hydro pipeline	36
Figure 34. Photo of pipeline making its way down to near the lake edge	37
Figure 35. Photo of pipeline including support structures	38
Figure 36. Photo of the last section of the pipeline before the hydro	39
Figure 37. Hydro including its enclosure	40
Figure 38. Photo of Hydro inside enclosure	41
Figure 39. Photo of old generator shed, Hydro, and outflow (discharge race) from hydro.....	42
Figure 40. Photo of Hydro discharge channel.....	43
Figure 41. Photo of the Old Generator Shed	44
Figure 42. Diagram showing location of new generator shed relative to hydro	45
Figure 43. Photo of new generator shed with old generator shed in the background	46
Figure 44. Photo of Yanmar generator	47
Figure 45. Photo of pipeline for lake water take when unnamed stream is low	48
Figure 46. Photo of pipeline into the lake for water take	49
Figure 47. Plan of viewing platform in front of Cavern House	50
Figure 48. Photo of viewing platform in front of Cavern House.....	51
Figure 49. Photo of gabion baskets that support the viewing platform.....	52
Figure 50. Photo of viewing platform over Tunnel Burn at the entrance to Te Ana-au Glowworm Caves.....	53
Figure 51. Photo of the dam in the caves which creates the Glow Worm Grotto	54
Figure 52. Diagram of lower section of cave walkways.....	55
Figure 53. Diagram of middle section of caves walkways	55
Figure 54. Diagram of upper section of cave walkways	55
Figure 55. Photo of Te Ana-au Cave walkways.....	56
Figure 56. Photo of Te Ana-au Caves Walkway including some of the Karst System Features.....	57
Figure 57. Photo of upper section of cave walkways (looking towards the cave entrance) including gates that close off access to Glowworm Grotto and punts.....	58
Figure 58. Photo of the last section of walkway and dam before glow worm grotto.....	59
Figure 59. Photo of hoist system used to raise and lower caves dam.....	60
Figure 60. Photo of lever hoist used to raise and lower caves dam	61
Figure 61. Photo of glow worm grotto and punt.....	62
Figure 62. Photo of Glowworms / Titiwai in Te Anau Glowworm Cave	63
Figure 63. Photo of Glowworms / Titiwai in Te Ana-au Glowworm Cave	64

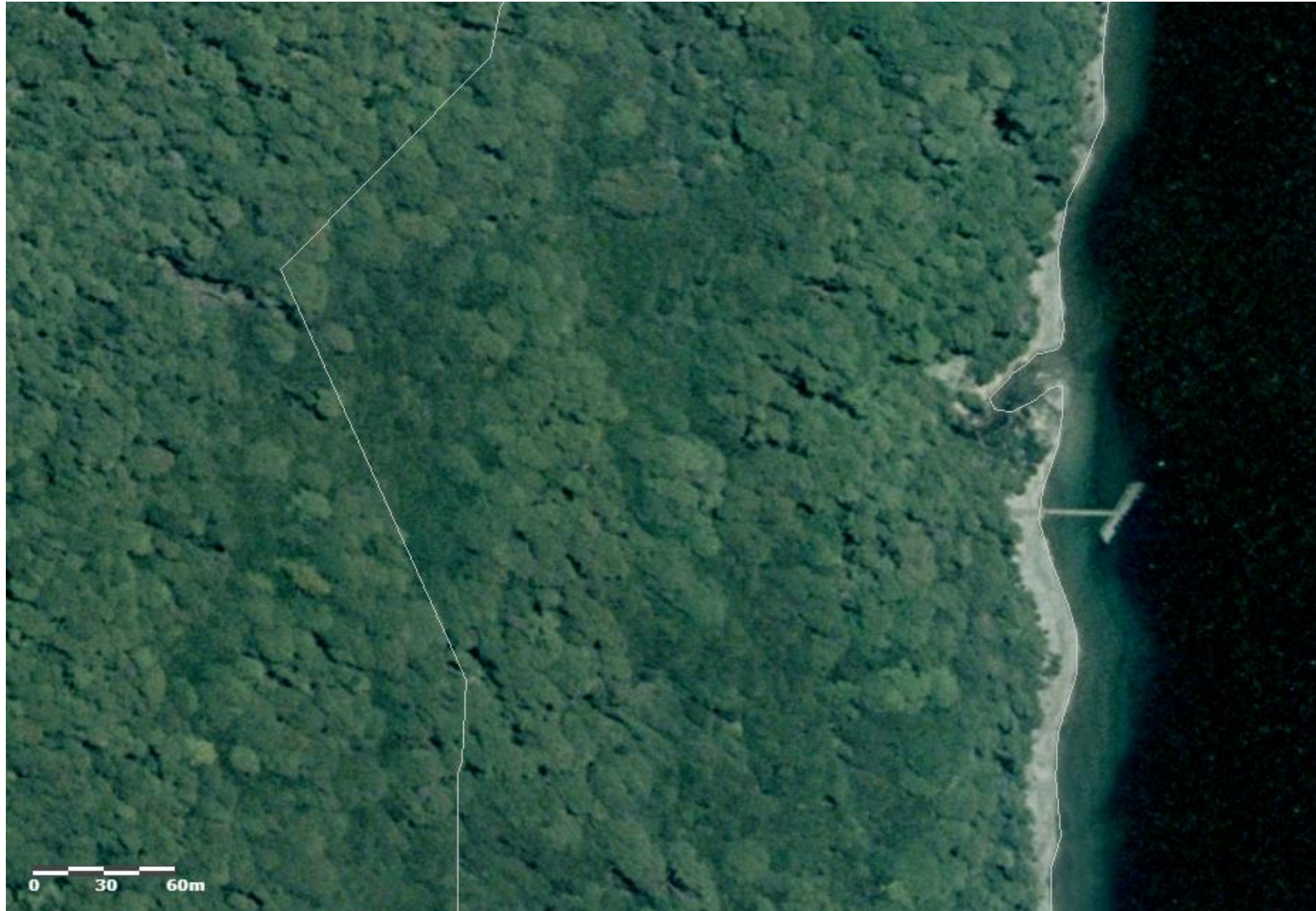
Figure 64. Photo of caves punts	65
Figure 65. Photo of the two cave punts.....	66
Figure 66. Photo of glass slides to detect movement in the caves	67
Figure 67. Photo of glass slides - to detect rock movement.....	68
Figure 68. Further rock movement detection equipment.....	69
Figure 69. Cave Entrance Palisade Barrier Details	70
Figure 70. Photo of debris catch protection structures incl monitoring rock fall risks	71
Figure 71. Cave entrance monitoring fence	72
Figure 72. Cave entrance protection structures.....	73
Figure 73. Photo of onsite signage	74
Figure 74. Photo of some of the onsite interpretation signage	75
Figure 75. Photo of onsite interpretation signage.....	76

Figure 1. Map of the site which also shows the location of 'Deadmans Point Navigation Light' relative to Te Ana-au Glowworm Caves¹



¹ <https://www.topomap.co.nz/NZTopoMap?v=2&ll=-45.303177,167.705011&z=14>

Figure 2. Aerial view of the site - including showing uplifted boundary of Takahe Specially Protected area²



² <https://maps.es.govt.nz/index.aspx?app=basic>

Figure 3. 28/10/1993 Aerial photo of Glowworm Caves, Lake Te Anau³



³ <https://maps.es.govt.nz/apps/historic-imagery/photos/A1257/A1257-0838-22.jpg>

Figure 4. 20/03/2022 Aerial photo of the site

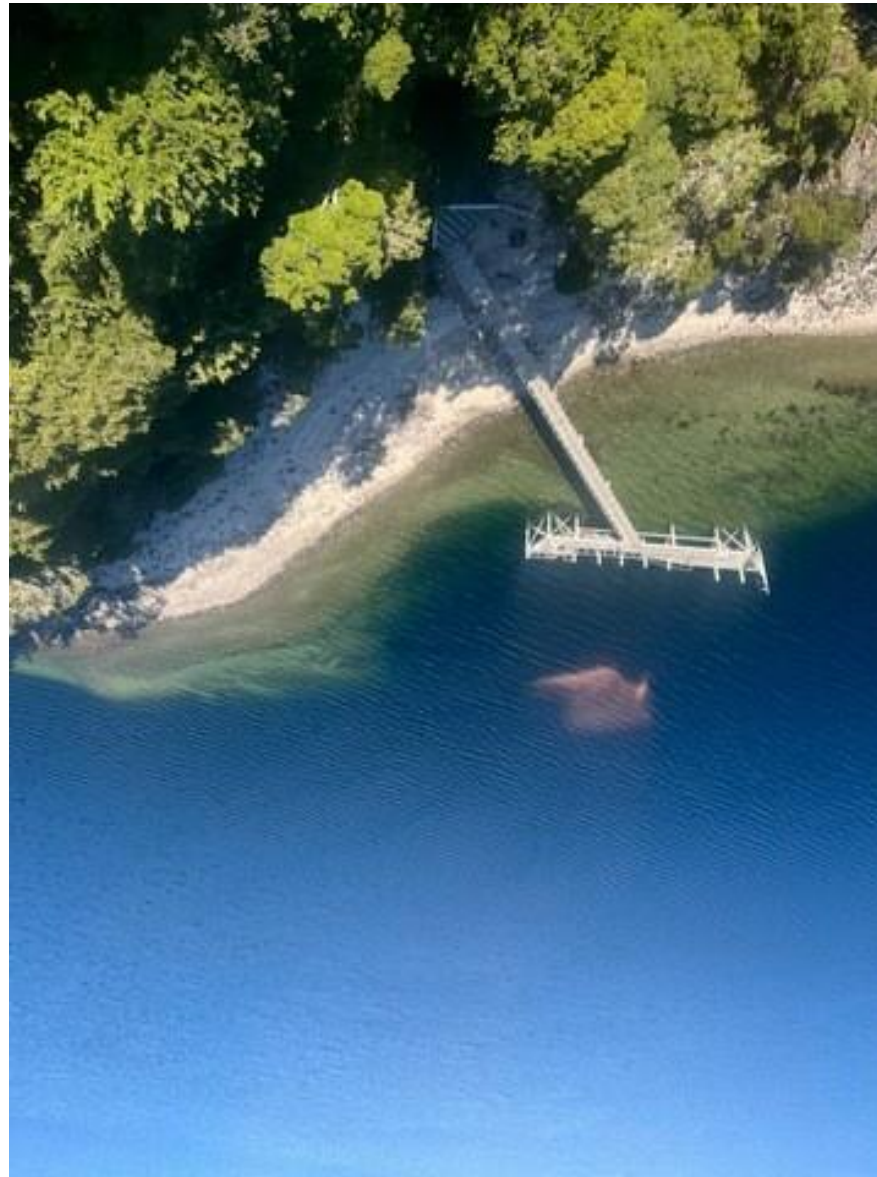


Figure 5. 20/03/2022 Aerial Photo of the site



Figure 6. Photo of the Te Ana-au Glowworm Cave site taken from the eastern shore of Lake Te Anau



Figure 7. Photo of the site taken from the eastern shore of Lake Te Anau - zooming in to make Luminosa and caves wharf visible



Figure 8. Photo of the site taken from eastern shore of Lake Te Anau - zoomed in to show Luminosa alongside of wharf



Figure 9. Photo of radar reflector (navigation aid) on Deadmans Point



Figure 10. Photo of Deadmans Point light (navigation aid)



Figure 11. Photo of the Te Ana-au Glowworm Caves site from Lake Te Anau - i.e. overview of the site



Figure 12. Photo of walkway from Te Ana-au Glowworm Caves Wharf to Cavern House

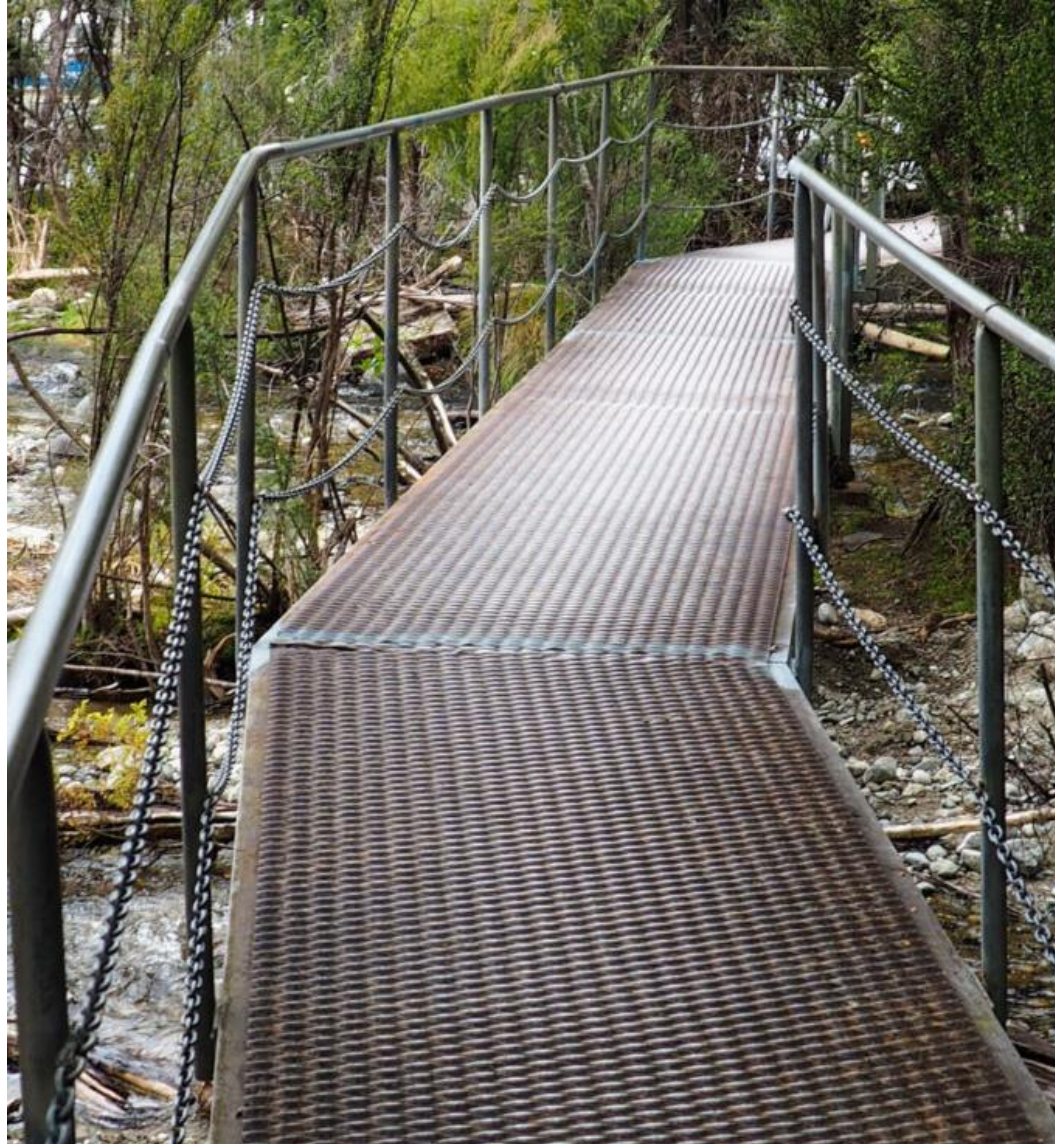


Figure 13. Diagram showing the layout of the walkways to Cavern House and the cave entrance



Figure 14. Photo of the Te Ana-au Glowworm Caves walkway shelter at the landward end of the 'caves wharf'



Figure 15. Photo of Te Ana-au Glowworm Caves Walkway Shelter (where passengers can wait, out of the weather for the Luminosa)



Figure 16. Photo of Cavern House from the lake



Figure 17. Photo of exterior of Cavern House



Figure 18. Photo of the exterior of Cavern House (rear)



Figure 19. Photo of interior of Cavern House



Figure 20. Photo of the interior of Cavern House



Figure 21. Photo of rear section of Cavern House – including interpretation panels



Figure 22. Photo of interior of Cavern House (access to toilet facilities)



Figure 23. Plan of the Beech House

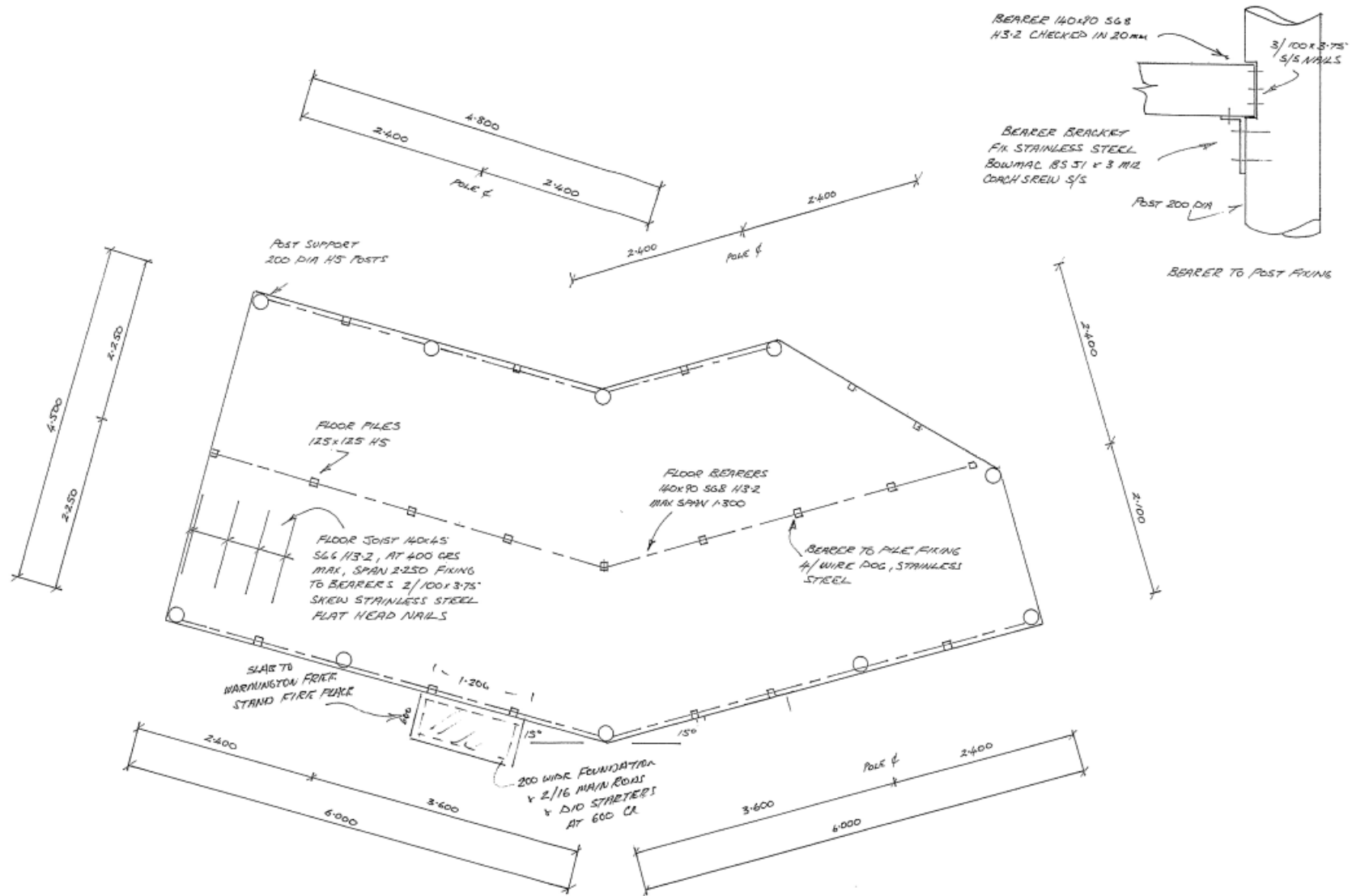
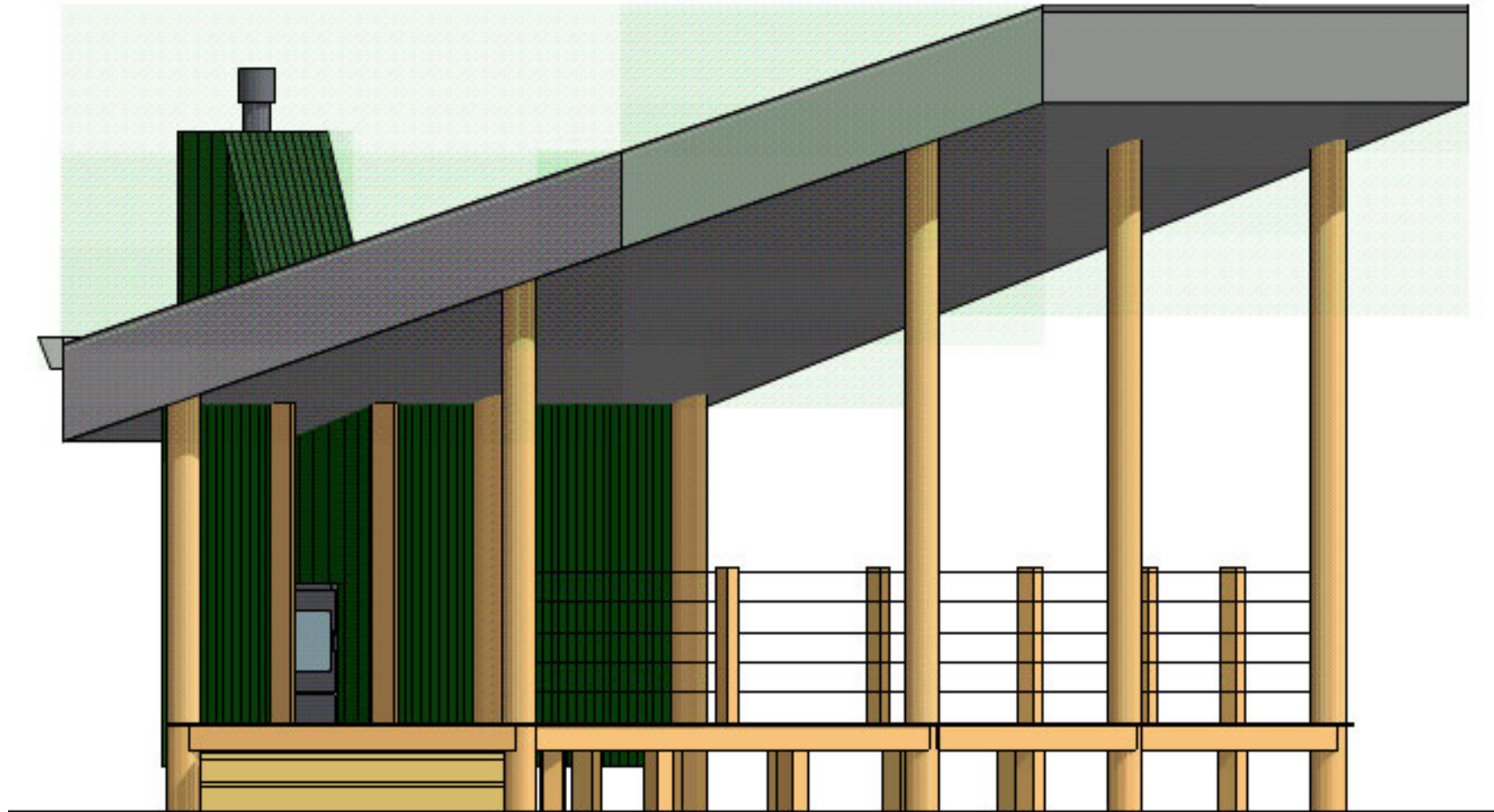


Figure 24. Drawing of Beech House North elevation



NORTH ELEVATION

Figure 25. Drawing of Beech House West Elevation



WEST ELEVATION

Figure 26. Photo of Exterior of Beech House



Figure 27. Photo of interior of Beech House showing the interpretation panels

