

MAPS – NATIONAL GEOGRAPHIC ORION

For each itinerary below, a general route map is included, along with maps of specific locations for marine mammal viewing.

1. Coastal New Zealand: Scenic Fjords, Māori History, and Abundant Wildlife

Map 1.1: Overall Route

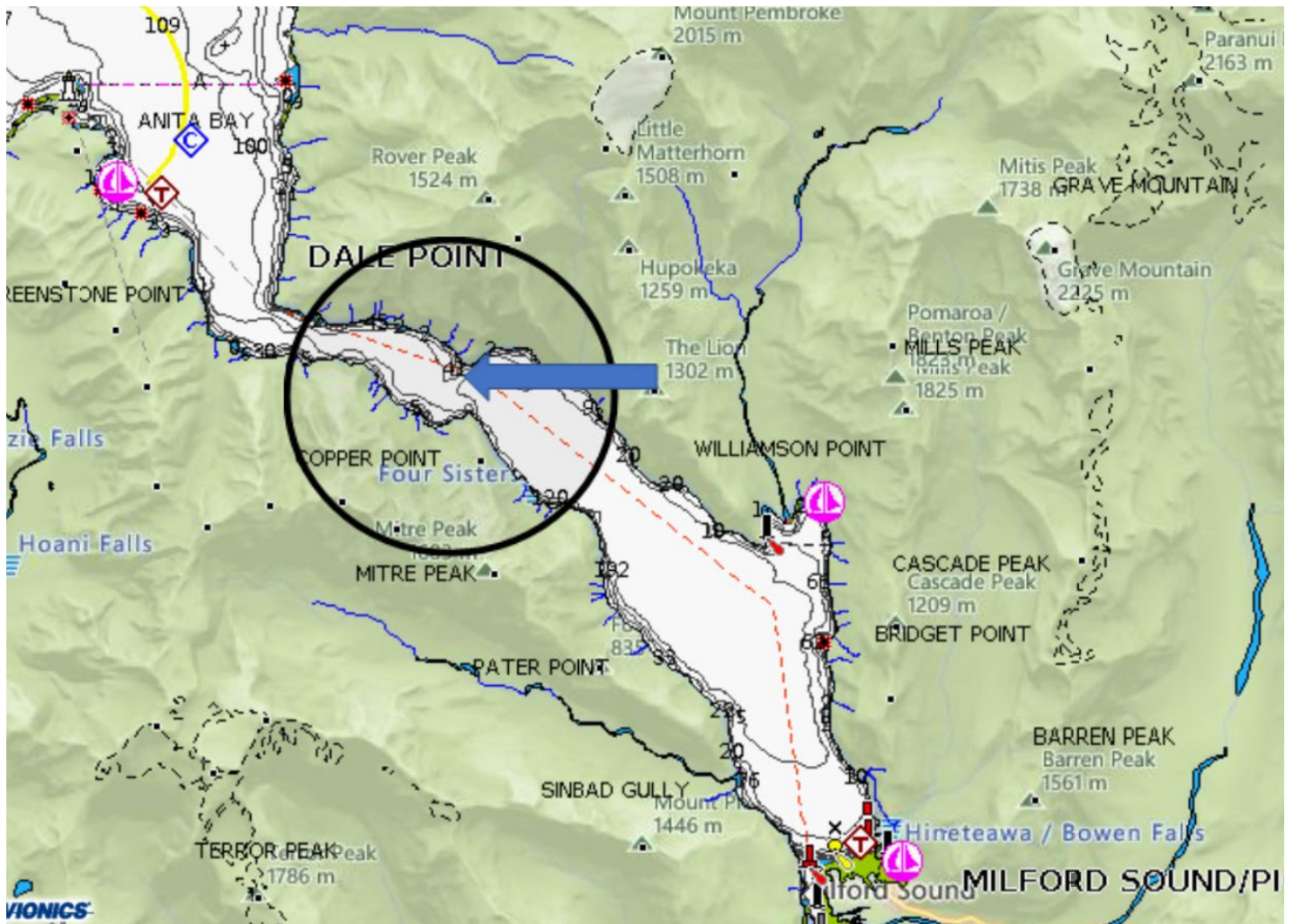
We will not be actively viewing wildlife *from the main vessel* during this itinerary.



Map 1.2: Milford Sound – Seal Rock

We plan to view marine mammals in this location but from Zodiacs (ancillary watercraft), not from the main vessel. On the days that we are in this location, our planned viewings will follow the below guidelines:

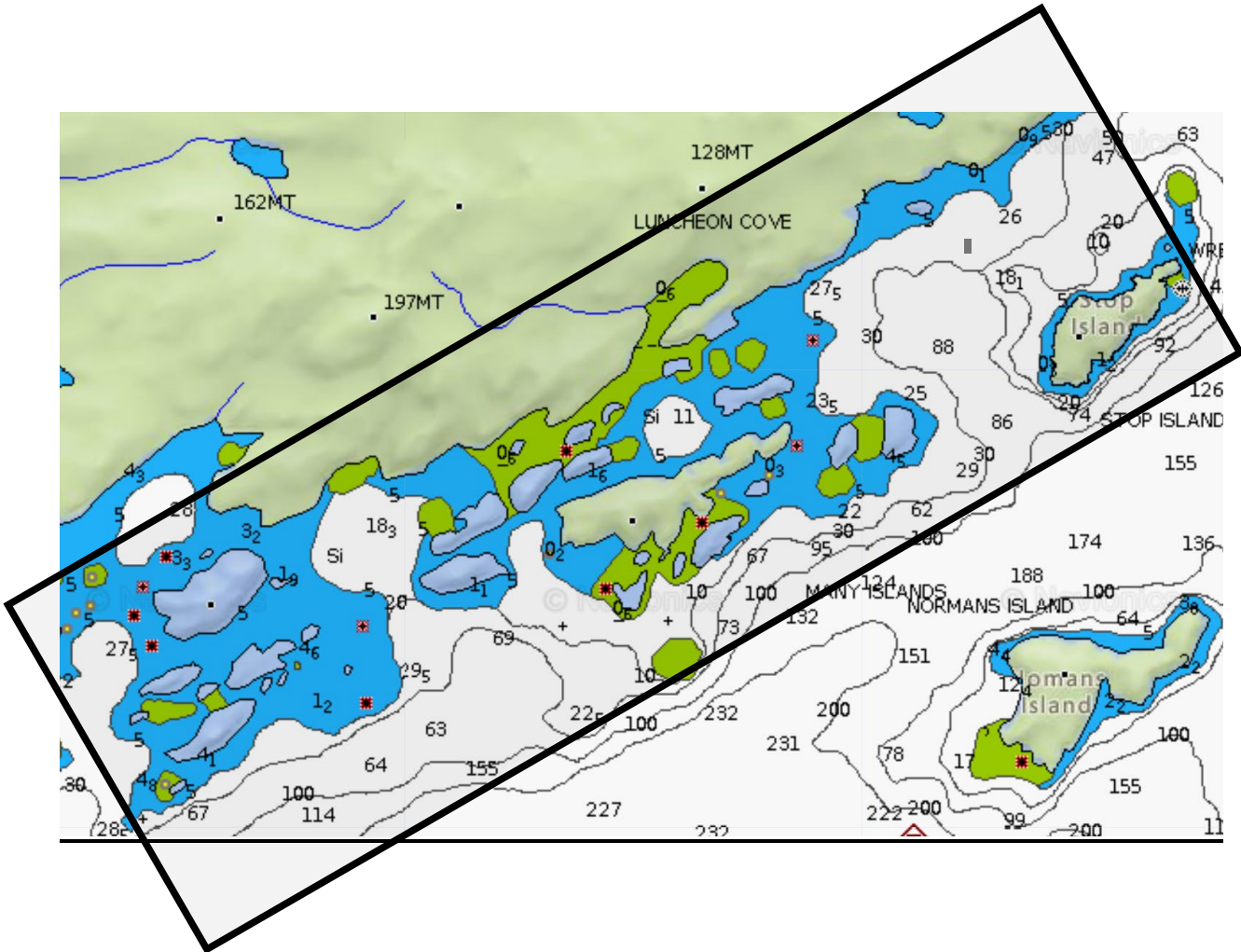
6 viewings (two zodiacs per viewing) x 5 minutes each = 30 minutes maximum



Map 1.3: Dusky Sound – Anchor Island’s Luncheon Cove and Surrounding Islands

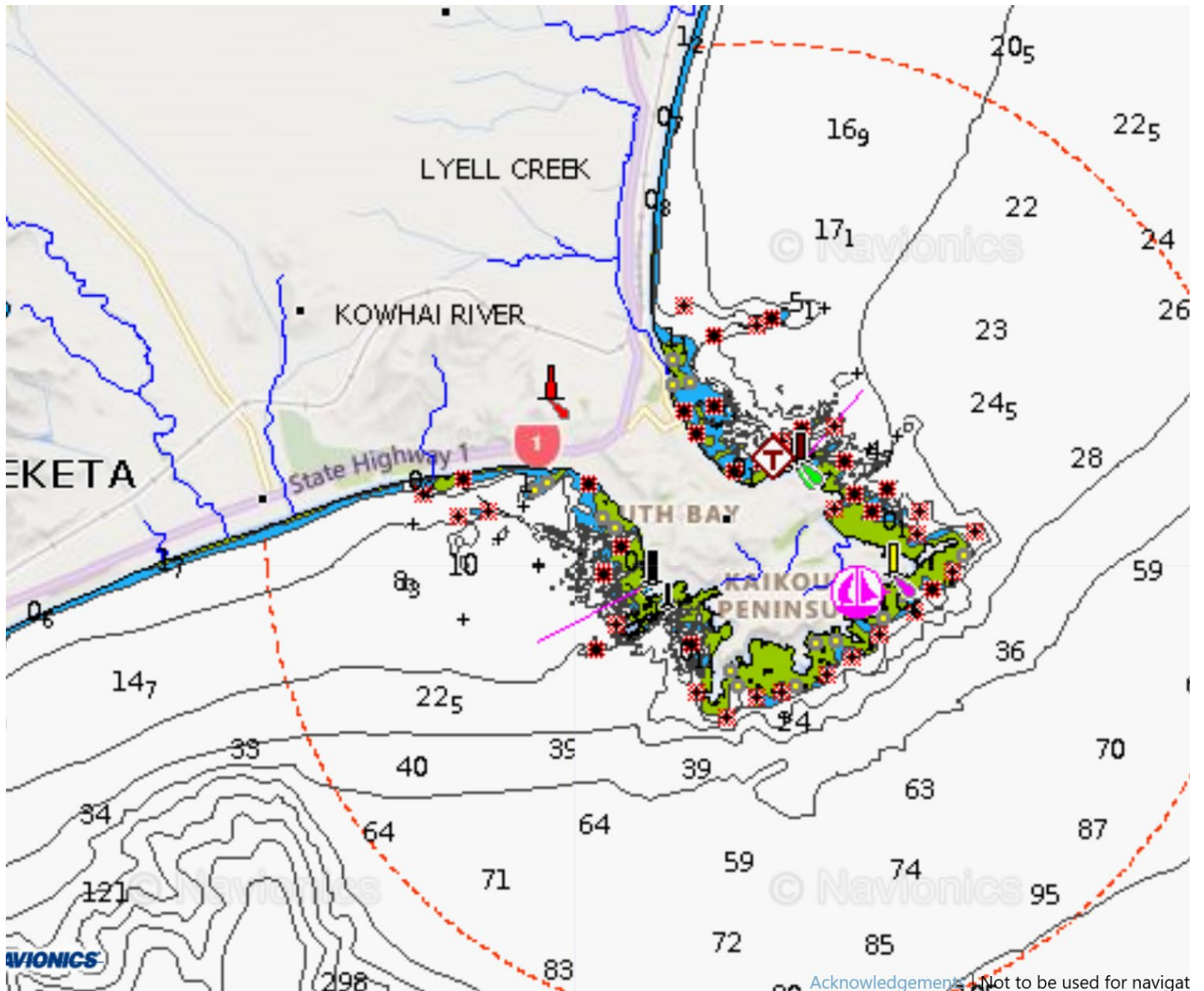
We plan to view marine mammals in this location but from Zodiacs (ancillary watercraft), not from the main vessel. On the days that we are in this location, our planned viewings will follow the below guidelines:

6 viewings (two zodiacs per viewing) x 5 minutes each = 30 minutes maximum



Map 1.4: Kaikōura Peninsula

We will be working with a third-party operator in the area that provides whale watching trips from Kaikōura. This is an area with a moratorium in place, however, we will be anchored south of the Kaikōura Peninsula in an area where whales may be present. We will not linger once underway at the end of our stay and will not stop if whales are spotted in the area.



2. Southern Odyssey: New Zealand and the Subantarctic Islands

Map 2.1: Overall Route

We will not be actively viewing wildlife from the main vessel during this itinerary. However, if we chance upon marine mammals while in transit, we will slow down to view unless in area with a viewing moratorium in place.

For planned marine mammal viewing from ancillary watercraft, see Maps 1.2, 1.3, and 1.4 above.

Note that this permit application does NOT include marine mammal viewing in the Subantarctic Islands. We will be applying for a separate Marine Mammal Viewing Permit for the Subantarctic Islands.



3. Roots of the Pacific: Exploring New Zealand and Melanisia

Map 3.1: Overall Route

We will operate in New Zealand waters for only two days of this itinerary. We have no intention to view wildlife from the main vessel or ancillary watercraft. However, if we chance upon marine mammals while in transit, we will slow down to view unless in area with a viewing moratorium in place.

